

Roseberry Cottage

BY ANDOVER FABRICS



About Roseberry Cottage

With its simple sophistication Roseberry Cottage will add a touch of cottage-style to your own home. This collection brings us back to times spent with loved ones in an old lake house, with its white washed floors and rustic furnishings.

Garden Path Quilt designed by: **Janet Houts**
Quilt Size: **78" x 78"** • Pillow Size: **24" x 24"**
andoverfabrics.com

andover • [makower uk](http://makower.uk)

Free Pattern Download Available

1384 Broadway New York, NY 10018
Tel. (800) 223-5678 • andoverfabrics.com

Garden Path Quilt



Introducing Andover Fabrics new collection: ROSEBERRY COTTAGE by Andover Fabrics

Quilt designed by Janet Houts

Quilt finishes 78" x 78"

6 Blocks Y: 13" x 16"

28 Border Blocks: 4" x 8"

Pillow finishes 24" x 24"

Subtle, soft pastels mix in floral prints, stripes, and plaids for this lovely wall quilt, sure to please anyone with a passion for flowers and gardens. The large strippy blocks are framed with an unusual serpentine border. The accompanying pillows are an additional bonus.

Cutting Directions

Note: Read assembly directions before cutting patches. All measurements are cut sizes and include 1/4" seam allowances. A fat 1/4 is an 18" x 20"-22" cut. The mitered borders include extra length for insurance. WOF designates the width of fabric from selvedge to selvedge (approximately 42" wide).

Fabric A

Cut (14) squares 5 1/4" x 5 1/4", cut in half diagonally twice to make 56 quarter-square triangles
Cut (2) squares 4 7/8" x 4 7/8", cut in half diagonally to make 4 half-square triangles
Cut (2) rectangles 3" x 13 1/2"

Fabric B

Cut (28) Template patches (read Step 1 before cutting)
Cut (2) rectangles 3 1/2" x 13 1/2"

Fabric C

Cut (9) strips 4 1/2" x WOF, pieced to make the following:
(4) borders 4 1/2" x 80"

Fabric D

Cut (8) strips 1 1/2" x WOF, pieced to make the following:
(4) borders 1 1/2" x 72"
Cut (2) rectangles 3 1/2" x 13 1/2"
Cut (2) rectangles 2" x 13 1/2"

Fabric E

Cut (8) strips 2 1/2" x WOF for binding
Cut (2) rectangles 3" x 13 1/2"

Fabric Requirements

		Yardage	Fabric
Fabric A	blocks, border	3/4 yard	9210-Y
Fabric B	blocks, border	1 1/2 yards	9211-Y
Fabric C	blocks, border	1 3/4 yards	9212-T
Fabric D	blocks, border	5/8 yard	9216-E
Fabric E	blocks, binding	3/4 yard	9216-T
Fabric F	blocks, border	1 1/2 yards	1867-WW
22 Prints	blocks	fat 1/4 yard each	
	9208-E 9208-T	9209-E 9209-T	
	9209-Y 9210-E	9210-T 9211-E	
	9211-T 9212-E	9212-Y 9213-E	
	9213-TG 9213-YO	9214-E *9214-T	
	9214-Y 9215-E	9215-T 9215-YC	
	9216-Y 9216-YC		
*Backing		5 yards	9214-T

Note: Yardage is sufficient to make quilt plus 2 pillow tops. Add 3/4 yard for each pillow backing of your choice.

Fabric F

Cut (13) strips 2 1/2" x WOF, pieced to make the following:
(4) borders 2 1/2" x 70"
(4) borders 2 1/2" x 58"
Cut (14) squares 5 1/4" x 5 1/4", cut in half diagonally twice to make 56 quarter-square triangles
Cut (2) squares 4 7/8" x 4 7/8", cut in half diagonally to make 4 half-square triangles

22 Prints

Cut a total of the following: (read step 1 before cutting)
(16) rectangles 6 1/2" x 13 1/2"
(12) rectangles 3 1/2" x 13 1/2"
(12) rectangles 3" x 13 1/2"
(14) rectangles 2" x 13 1/2"

Backing

Cut (2) panels 42" x 84", pieced to fit quilt top with overlap on all sides

Garden Path Quilt

Cutting Directions for either pillow:

4 chosen prints for center block:

- Cut (1) rectangle $6\frac{1}{2}'' \times 13\frac{1}{2}''$
- Cut (1) rectangle $3\frac{1}{2}'' \times 13\frac{1}{2}''$
- Cut (1) rectangle $3'' \times 13\frac{1}{2}''$
- Cut (1) rectangle $2'' \times 13\frac{1}{2}''$

Backing

Cut (1) square $26'' \times 26''$ (cut larger for ease of construction)

Cutting Directions for Pillow with Plain Border

Cut 4 rectangles and backing as listed above.

Fabric C

Cut (4) borders $4\frac{1}{2}'' \times 26''$ (includes extra length for miter)

Fabric F

Cut (4) borders $2'' \times 18''$ (includes extra length for miter)

Cutting Directions for Pillow with Zigzag Border

Fabric A

Cut (4) squares $5\frac{1}{4}'' \times 5\frac{1}{4}''$, cut in half diagonally twice to make 16 quarter-square triangles

Cut (2) squares $4\frac{7}{8}'' \times 4\frac{7}{8}''$, cut in half diagonally to make 4 half-square triangles

Fabric B

Cut (8) Template patches (read step 1 of quilt directions before cutting)

Fabric F

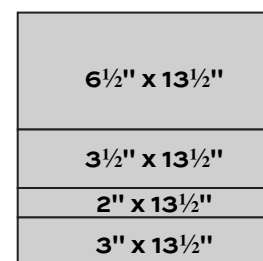
Cut (4) borders $2'' \times 18''$ (includes extra length for miter)

Cut (4) squares $5\frac{1}{4}'' \times 5\frac{1}{4}''$, cut in half diagonally twice to make 16 quarter-square triangles

Cut (2) squares $4\frac{7}{8}'' \times 4\frac{7}{8}''$, cut in half diagonally to make 4 half-square triangles

Making the Quilt

1. The quilt is scrappy, so feel free to cut the rectangles from fabrics in any combination, or refer to the quilt diagram and photo for fabric placement in the blocks. The rectangles must be cut crosswise from the Fat $\frac{1}{4}$ prints. The border patches (Template) are cut lengthwise on Fabric B so the stripe runs parallel with the long sides.
2. Referring to the block diagram, join 4 rectangles in the order shown to make a block. Use any combination of prints that you wish. Make 16 blocks.
3. The $5\frac{1}{4}''$ quarter-square triangles (Fabrics A and F) must be joined as shown in Diagram 1. Position the A triangle on top of an F triangle as shown, and stitch along the short right side. Once you are satisfied that the fabrics are correctly oriented, make 56 Border Units like this.
4. Position a Border Unit on top of a Fabric B Template patch, aligning the corners as shown. Stitch along the long edge (Diagram 2). Press open. Align a second Border Unit on top of the Template patch, aligning corners as shown in Diagram 3. Stitch. Press open. The Border Block should measure $4\frac{1}{2}'' \times 8\frac{1}{2}''$. If it does not, adjust your stitching and pressing. Make 28 Border Blocks.
5. Join Fabric A and F $4\frac{7}{8}''$ triangles to make a Corner Block. They should measure $4\frac{1}{2}''$ square. Make 4.
6. Referring to the Quilt Diagram, arrange 4 blocks in 4 rows each, rotating every other block as shown. Once you are satisfied with the fabric arrangement, join the blocks into rows, and then join the rows.



Block – Make 16

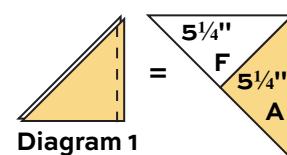


Diagram 1

Border Unit
Make 56

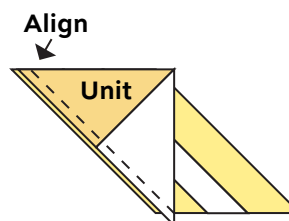


Diagram 2

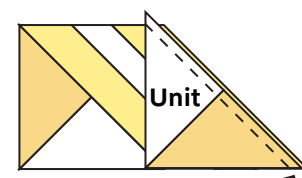
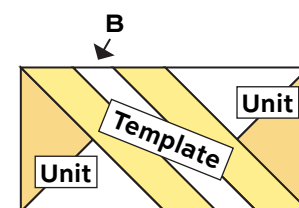
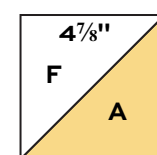


Diagram 3



Border Block – Make 28



Corner Block
Make 4

Garden Path Quilt

7. Sew short Fabric F borders to the quilt, starting and stopping stitching $\frac{1}{4}$ " from the quilt's raw edge. Miter the corners and trim the excess.
8. Join 7 Border Blocks side by side to make a border. Make 4 borders alike. Sew borders to the sides. Join a Corner Block to ends of remaining borders. Sew to the top and bottom.
9. Matching centers, join Fabric F, Fabric D, and Fabric C border strips. Sew borders to the quilt, starting and stopping stitching $\frac{1}{4}$ " from the quilt's raw edge. Miter the corners and trim the excess.

Finishing the Quilt

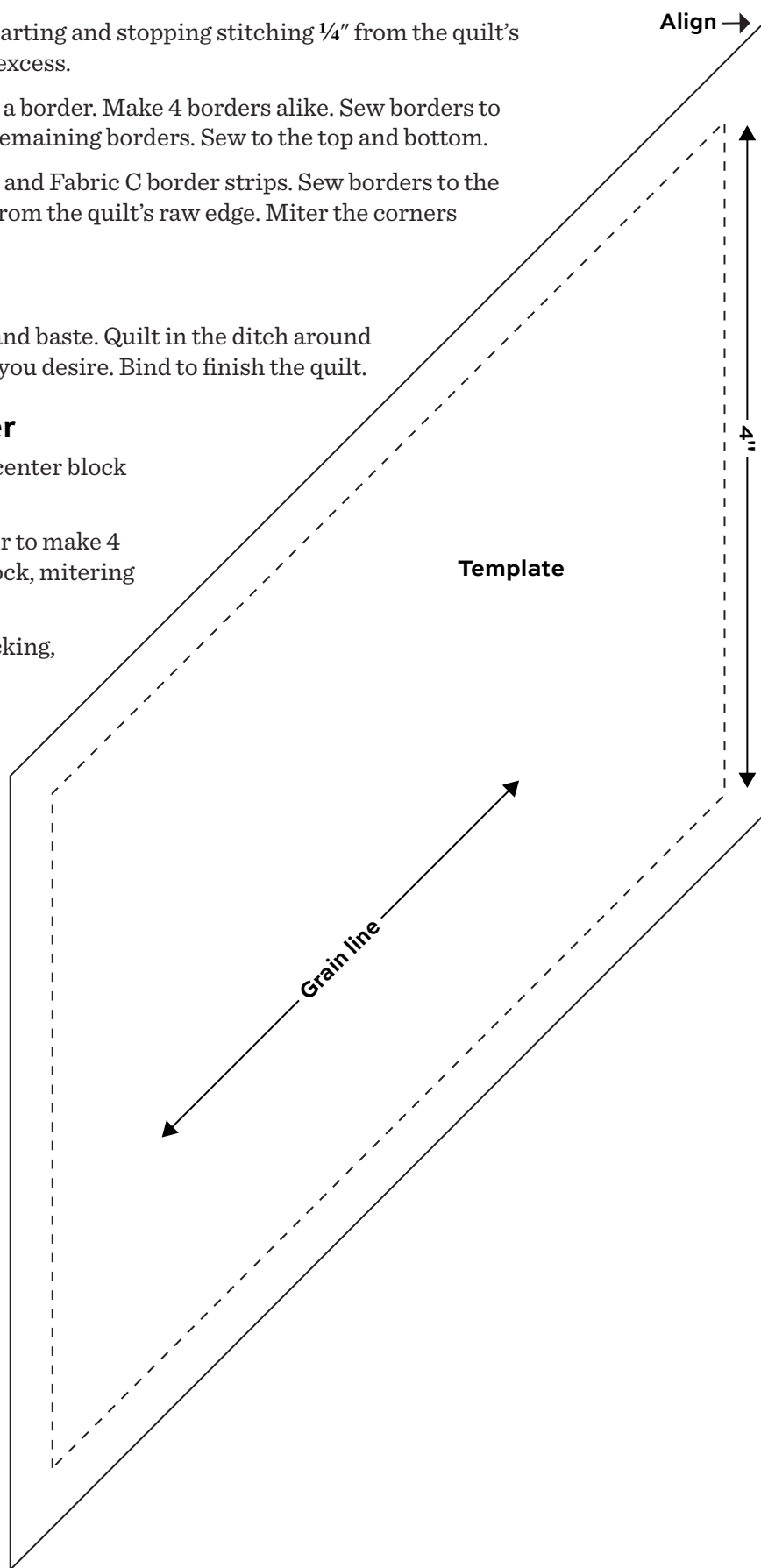
10. Layer the quilt with batting and backing and baste. Quilt in the ditch around borders and block patches. Quilt more as you desire. Bind to finish the quilt.

Making Pillow with Plain Border

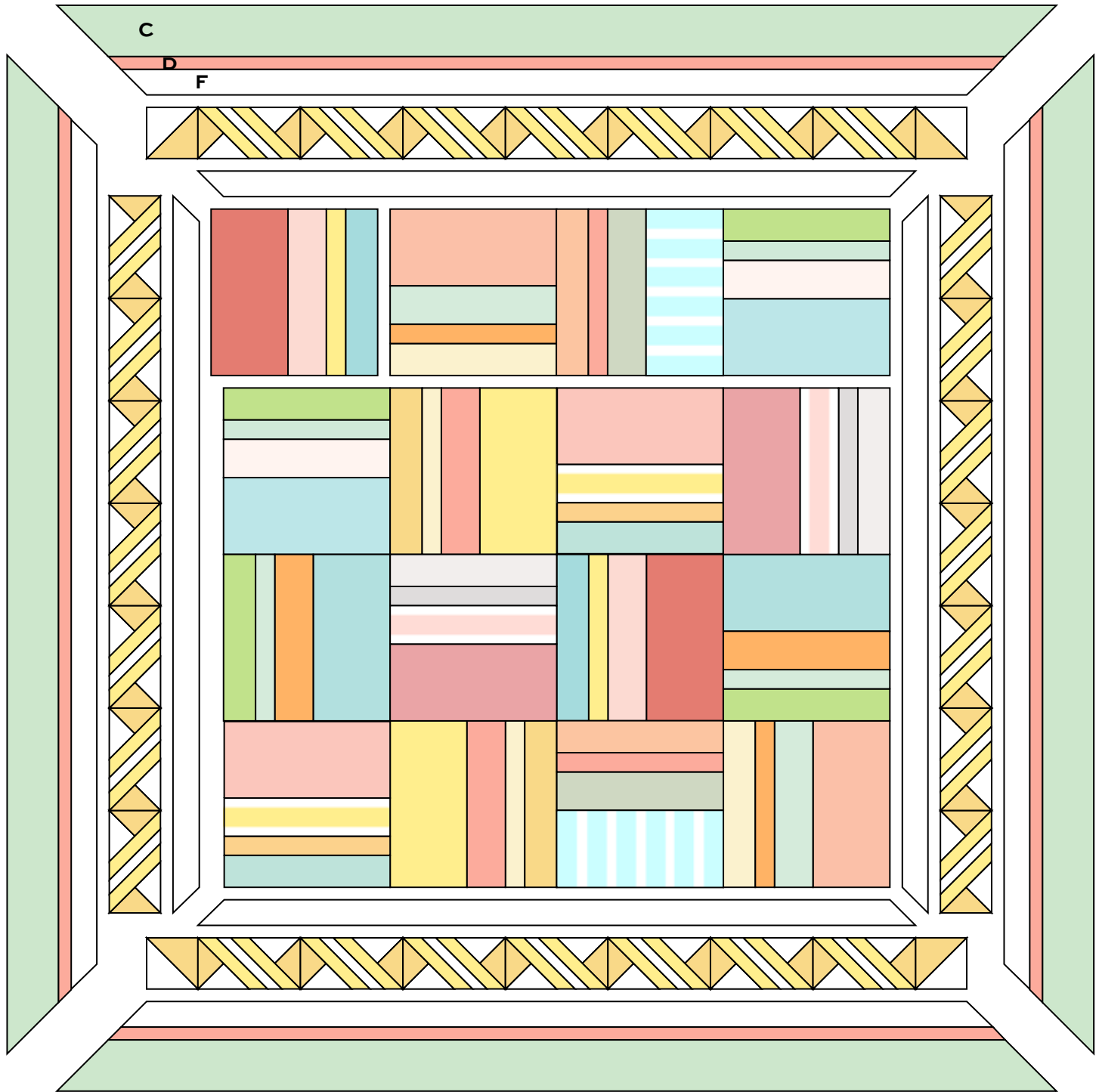
1. Follow directions for the quilt to make a center block with the 4 strips.
2. Join Fabric C and F border strips together to make 4 borders. Sew to the sides of the center block, mitering the corners.
3. Position the pillow front on top of the backing, right sides together. Pin the two together carefully. Stitch around the edge, leaving a generous opening along one side (not at a corner). Backstitch at the opening to secure. Trim the backing even with the pillow front, and trim the corners. Turn right side out and use a knitting needle or chopstick from the inside to push the seam so there are no puckers. Press the edge. Lightly stuff with polyfil or a 24" pillow form. Stitch the opening closed.

Making Pillow with Zigzag Border

1. Follow directions for the quilt to make a center block with the 4 strips.
2. Sew Fabric F borders to the quilt, mitering the corners.
3. Read steps 3-5 for the quilt and make 8 Border Blocks and 4 Corner Blocks. Join 2 Border Blocks to make a pieced border. Repeat to make 4 borders alike. Sew to the sides of the pillow. Sew Corner Blocks to ends of remaining borders. Sew to the top and bottom.
4. Follow step 3 for the plain pillow to finish.



Garden Path Quilt



Quilt Diagram

Summer Cottage

BY ANDOVER



9208-E



9209-E



9209-T



9209-Y



9208-T



9210-E



9210-T



9210-Y



9211-E



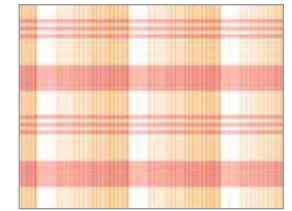
9212-E



9213-E



9214-E



9215-E



9211-T



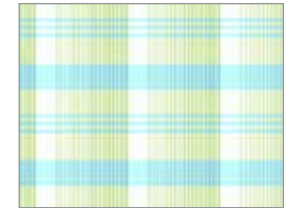
9212-T



9213-TG



9214-T



9215-T



9211-Y



9212-Y



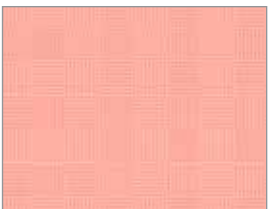
9213-YO



9214-Y



9215-YC



9216-E



9216-T



9216-Y



9216-YC



1867-WW

All fabrics are used in quilt pattern. Fabrics shown are 25% of actual size.

andover

•
•
• makower.uk

Free Pattern Download Available

1384 Broadway New York, NY 10018
Tel. (800) 223-5678 • andoverfabrics.com